

## Miscelatore vasca completo ARCANA CERAMIC\_AC000102

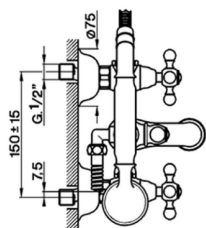
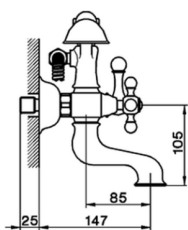
MODELLO **AC000102**

Miscelatore vasca completo, doccetta monogetto  
Arcana, flex Ottone 150 cm



### FINITURE DISPONIBILI

-  **21** 21 Cromo
-  **24** 24 Oro
-  **26** 26 Vecchio Rame
-  **27** 27 Vecchio Bronzo
-  **2A** 2A Nichel Satinato Spazzolato
-  **74** 74 Cromo/Oro



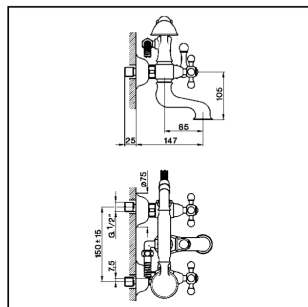
### CARATTERISTICHE



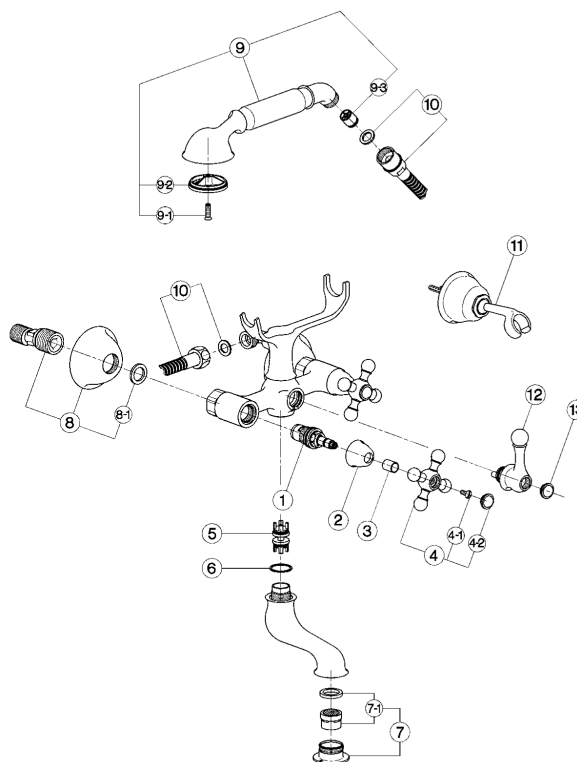
## Miscelatore vasca completo ARCANA CERAMIC\_AC000102

# cisal

### AC 00010 (AC 00007 - AC 00012 - AC 00013)



- Gruppo vasca
- Bath mixer
- Badebatterie
- Mélangeur bain/douche



| bar | PORTATA BOCCA DI EROGAZIONE *<br>SPOUT FLOW RATE<br>DURCHFLUSS WANNENEINLAUF<br>DÉBIT BEC DÉVERSEUR<br>l/min. |
|-----|---|
| 0,5 | 11  |
| 1   | 15,5  |
| 2   | 22,5  |
| 3   | 27,5  |
| 4   | 31,5  |
| 5   | 35  |

\* con resistenza silenziosa della classe di portata C (30 l/min. a 3 bar)  
with hydraulic resistance of flow rate class C (30 l/min. at 3 bar)  
mit geräuscharmen Widerstand der Durchflussklasse C (30 l/min. bei 3 bar)  
avec aérateur classe C (30 l/min. à 3 bar)

| NR. | DESCRIZIONE<br>DESCRIPTION<br>BESCHREIBUNG<br>DÉSCRIPTION   | N. CODICE<br>CODE NO.<br>WERKSNR.<br>NR. CODE | NR. | DESCRIZIONE<br>DESCRIPTION<br>BESCHREIBUNG<br>DÉSCRIPTION  | N. CODICE<br>CODE NO.<br>WERKSNR.<br>NR. CODE | NR. | DESCRIZIONE<br>DESCRIPTION<br>BESCHREIBUNG<br>DÉSCRIPTION  | N. CODICE<br>CODE NO.<br>WERKSNR.<br>NR. CODE |
|-----|---|---|-----|--|---|-----|--|---|
| 1   | Vitolo ceramico DX per monofori e gruppi "AC"<br>Ceramic headvalve 1/2" right "AC"-short<br>Keramikoberteil 1/2"-rechts-"AC"-kurz<br>Tête céramique 1/2" droite "AC" - courte | ZZ 92858 0                                    | 7-1 | Cartuccia per aeratore M. 28x1<br>Mousseur cartridge M.28x1<br>Kart. 1/Perlator M.28x1<br>Cartouche x mousseur M.28x1  | ZZ 92694 0                                    | 11  | Supporto duplex esterno "AR"<br>Hook handshower "AR"<br>Wandhalter 1/ "AR"<br>Support mural "AR"   | ZZ 90082 0                                    |
| 2   | Capuccio coprivite D32 H.21 "AC"<br>Escutcheon D32 H.21 "AC" headvalve<br>Abdeckkappe D32 H.21 "AC"<br>Rosace couvre-tête D32 H.21 "AC"                                       | ZZ 92652 0                                    | 8   | Eccentrico con rosone "AC"<br>Excentric connection with escutcheon "AC"<br>S - Anschluss m. Rosette "AC"<br>Excentrique + rosace "AC"  | ZZ 92826 0                                    |     | Deviatore per gruppo vasca "AR"<br>Diverter for bath mixer "AR"<br>Umsteller - WB - "AR"<br>Croisillon inverseur "AR"                                  |   |
| 3   | Tubetto copriasta "AR" H.15,5<br>Sliding cover tube "AR" H.15,5<br>Abdeckkappe Oberteil "AR" H.15,5<br>Tube couvre-tête "AR" H.15,5   | ZZ 92619 0                                    | 8-1 | Guarnizione NBR 90 SH. 24x16x2,7<br>Gasket NBR 90 SH. 24x16x2,7<br>Dichtung NBR 90 SH. 24x16x2,7<br>Joint NBR 90 SH. 24x16x2,7   | ZZ 92689 0                                    |     | Guarnizione NBR 90 SH. 24x16x2,7<br>Placchetta a vite maniglia "AR"<br>Cap for handle "AR"<br>Abdeckkappe "AR" Griff<br>Plaque cache - vis crois. "AR" |   |
| 4   | Maniglia "AR" con vite e placchetta<br>Handle with screw and plate "AR"<br>Griff "AR" mit Schraube und Abdeckkappe<br>Croisillon avec vis et plaque "AR"                      | ZZ 90307 0                                    | 9   | Doccia per gruppo vasca "AR"<br>Handshower "AR"<br>Handbrause-WB-"AR"<br>Douchette "AR"  | ZZ 90078 0                                    |     |  |   |
| 4-1 | Vite M.4,5x10 lb. tc. zigrinata<br>Screw M.4,5x10<br>Schraube M.4,5x10<br>Vis M.4,5x10  | ZZ 92609 0                                    | 9-1 | Vite di fissaggio diffusore per doccia in ottone<br>Fixing screw for spray-kit handshower<br>Befestigungsschraube f. Einsatz 1.Br. in Messing<br>Vis fixation diffuseur pour douchette en laiton | ZZ 92640 0                                    |     |  |   |
| 4-2 | Placchetta a vite maniglia "AR"<br>Cap for handle "AR"<br>Abdeckkappe "AR" Griff<br>Plaque cache - vis crois. "AR"  | ZZ 92617 0                                    | 9-1 | Vite di fissaggio diffusore per doccia in ABS<br>Fixing screw for spray-kit ABS handshower<br>Befestigungsschraube f. Einsatz 1.Bräuse in ABS<br>Vis de fixation diffuseur pour douchette en ABS | ZZ 93401 0                                    |     |  |   |
| 5   | Valvola deviazione per gruppo vasca<br>Diverging valve for bath mixer<br>Umstellungsventil<br>Tête pour inverseur   | ZZ 92779 0                                    | 9-2 | Diffusore doccia "AR"<br>Spray-kit handshower "AR"<br>Einsatz 1.Bräuse "AR"<br>Diffuseur douchette "AR"  | ZZ 90544 0                                    |     |  |   |
| 6   | Guarnizione fibra 26x22,5x1<br>Gasket rubber 26x22,5x1<br>Fiberring 26x22,5x1<br>Joint en fibre 26x22,5x1   | ZZ 92692 0                                    | 9-3 | Valvola anti-ritorno Ø15 per doccia<br>Back-flow valve Ø15<br>Durchflussverhinderer Ø15<br>Clapet anti-retour Ø15  | ZZ 92956 0                                    |     |  |   |
| 7   | Bordino con aeratore M. 28x1 "AR"<br>Overfill with mousseur M.28x1 "AR"<br>Perlator M.28x1 "AR"<br>Garniture avec mousseur M.28x1 "AR"  | ZZ 92784 0                                    | 10  | Flexibile 150 cm Ø14 1/2"x1/2" DA conico<br>Flex 150 cm Ø14 1/2"x1/2" conic<br>Brausschlauch 150 cm Ø14 1/2"x1/2"<br>Flex 150 cm Ø14 1/2"x1/2"   | ZA 00901 0                                    |     |  |   |

AC.1

AC000102

<https://www.cisal.it/miscelatore-vasca-completo-arcana-ceramic-ac000102>

2026-05-05