

Rubinetto monoacqua a parete ARCANA CERAMIC_AC001520

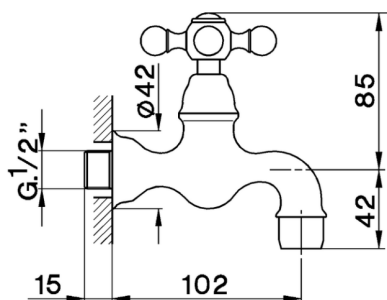
MODELLO **AC001520**

Rubinetto monoacqua a parete

FINITURE DISPONIBILI



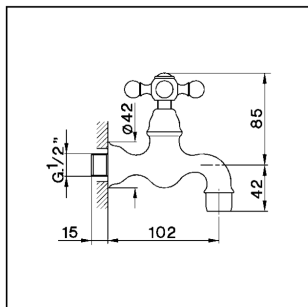
CARATTERISTICHE



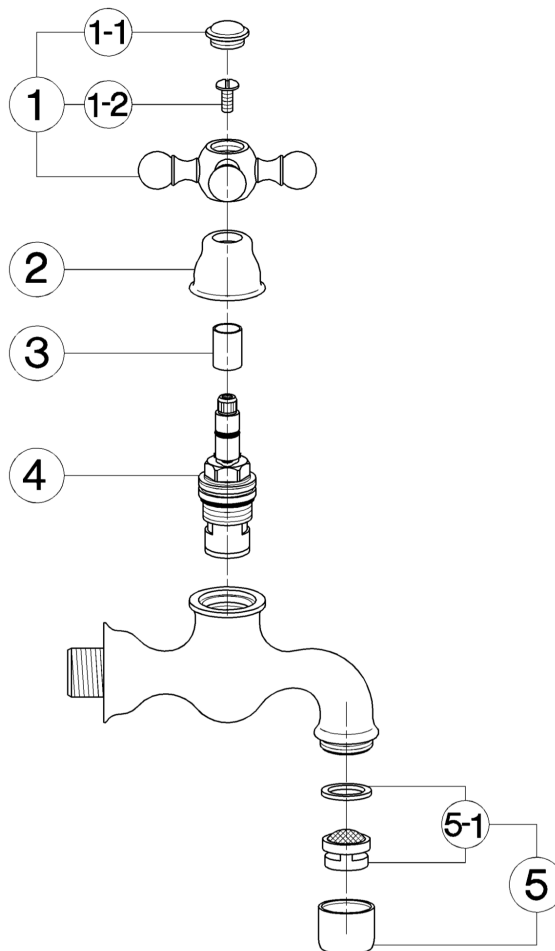
Rubinetto monoacqua a parete ARCANA CERAMIC_AC001520

cisal

AC 00152



- Rubinetto a parete
- Simple tap
- Auslaufventil
- Robinet simple



| bar | PORTATA * FLOW RATE DURCHFLOSS DEBIT l/min. |
|-----|---|
| 0,5 | 8,5 |
| 1 | 12 |
| 2 | 16,5 |
| 3 | 20 |
| 4 | 23 |
| 5 | 26 |

* con resistenza silenziosa della classe di portata B (25.2 l/min. a 3 bar)
with hydraulic resistance of flow rate class B (25.2 l/min. at 3 bar)
mit geräuscharmen Widerstand der Durchflussklasse B (25.2 l/min. bei 3 bar)
avec aérateur classe B (25.2 l/min. à 3 bar)

| NR. | DESCRIZIONE DESCRIPTION BESCHREIBUNG DESCRIPTION | N. CODICE CODE NO. WERKSNR. NR. CODE | NR. | DESCRIZIONE DESCRIPTION BESCHREIBUNG DESCRIPTION | N. CODICE CODE NO. WERKSNR. NR. CODE | NR. | DESCRIZIONE DESCRIPTION BESCHREIBUNG DESCRIPTION | N. CODICE CODE NO. WERKSNR. NR. CODE |
|-----|--|---|-----|---|---|-----|---|---|
| 1 | Maniglia "AR" con vite e placchetta Handle with screw and plate "AR" Griff "AR" mit Schraube und Abdeckkappe Crosillon avec vis et plaque "AR" | ZZ 90307 0 | 5 | Aeratore M.22x1 IB Mousseur M.22x1 IB Perlator M.22x1 IB Mousseur M.22x1 IB | ZZ 92841 0 | | | |
| 1-1 | Placchetta a vite maniglia "AR" Cap for handle "AR" Abdeckkappe "AR" Griff Plaque cache - vis crois. "AR" | ZZ 92617 0 | 5-1 | Cartuccia per aeratore M. 22x1 Mousseur cartridge M.22x1 Kart. 1/Perlator M.22x1 Cartouche x mousseur M.22x1 | ZZ 92703 0 | | | |
| 1-2 | Vite M.4,5x10 tb. tc. zigrinata Screw M.4,5x10 Schraube M.4,5x10 Vis M.4,5x10 | ZZ 92609 0 | | | | | | |
| 2 | Cappuccio coprivite Ø32 H.21 "AC" Escaltheon Ø32 H.21 "AC" headvalve Abdeckkappe Ø32 H.21 "AC" Rosace couvre-tête Ø32 H.21 "AC" | ZZ 92652 0 | | | | | | |
| 3 | Tubetto coprivite "AR" H.15,5 Sliding cover tube "AR" H.15,5 Abdeckkappe Oberteil "AR" H.15,5 Tube couvre-tête "AR" H.15,5 | ZZ 92619 0 | | | | | | |
| 4 | Vilone ceramico DX per mondolori e gruppi "AC" Ceramic headvalve 1/2" right "AC"-short Keramikoberteil 1/2"-rechts "AC"-kurz Tête céramique 1/2" droite "AC" - courte | ZZ 92858 0 | | | | | | |

AC.16

AC001520

<https://www.cisal.it/rubinetto-monoacqua-a-parete-arcana-ceramic-ac001520>

2026-06-18