

Rubinetto monoacqua a parete TR_TR001440

MODELLO **TR001440**

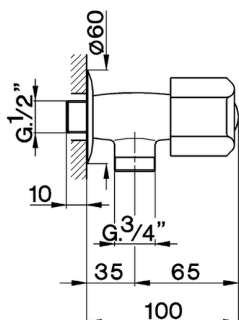
Rubinetto monoacqua a parete, senza maniglia, senza bocca



FINITURE DISPONIBILI



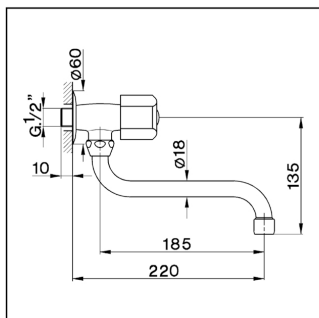
CARATTERISTICHE



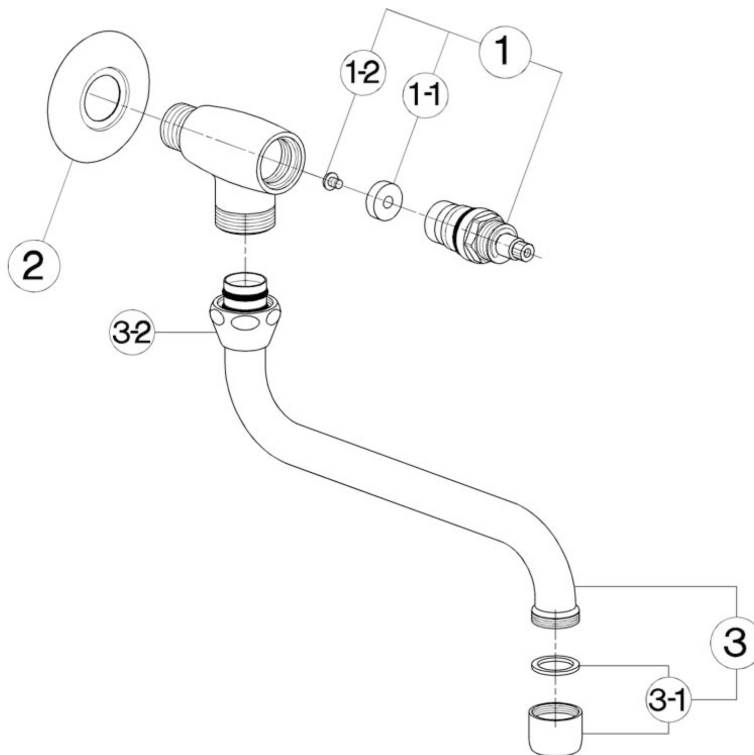
Rubinetto monoacqua a parete TR_TR001440

cisal

TR 00142 (TR 00144)



- Rubinetto a parete
- Simple tap
- Spültisch-Schwenkventil
- Robinet de service



| bar | PORTATA BOCCA DI EROGAZIONE * SPOUT FLOW RATE DURCHFLOSS WÄNNENEINLAUF DEBIT BEC DÉVERSEUR l/min. |
|-----|---|
| 0.1 | 14.5 |
| 0.2 | 20 |
| 0.3 | 25 |
| 0.4 | 28.5 |
| 0.5 | 31.5 |
| 1 | 44 |

* con rompigetto
with antispash
mit Strahlregler
avec brise-jet

| NR. | DESCRIZIONE DESCRIPTION BESCHREIBUNG DESCRIPTION | N. CODICE CODE NO. WERKSNR. NR. CODE | NR. | DESCRIZIONE DESCRIPTION BESCHREIBUNG DESCRIPTION | N. CODICE CODE NO. WERKSNR. NR. CODE | NR. | DESCRIZIONE DESCRIPTION BESCHREIBUNG DESCRIPTION | N. CODICE CODE NO. WERKSNR. NR. CODE |
|-----|--|---|-----|--|---|-----|---|---|
| 1 | Vitone 1/2" "TR" Headvalve 1/2" "TR" Oberteil 1/2" "TR" Tête 1/2" "TR" | ZZ 92869 0 | 3-2 | Calotta 3/4" es.29 Ø19.5 Nur 3/4" Ø19.5 Mutter 3/4" Ø19.5 Ecrrou 3/4" Ø19.5 | ZZ 92615 0 | | | |
| 1-1 | Guarnizione NBR 90 SH. 16.9x5.5x5 Gasket NBR 90 SH. 16.9x5.5x5 Dichtung NBR 90 SH. 16.9x5.5x5 Joint NBR 90 SH. 16.9x5.5x5 | ZZ 92699 0 | | | | | | |
| 1-2 | Vite M.4x4.5 tb. Ø8 l.cr. Screw M.4x4.5 Schraube M.4x4.5 Vis M.4x4.5 | ZZ 92625 0 | | | | | | |
| 2 | Rosone rubinetto rovesciato Escutcheon simple tap Rosette Rosace en inox | ZZ 92605 0 | | | | | | |
| 3 | Canna a S Ø18 interasse 185 Swinging spout 185 Ø18 Auslauf-Rohr-S-185 Ø18 Bec orientable 185 Ø18 | ZZ 92735 0 | | | | | | |
| 3-1 | Rompigetto M.22x1 Antispash M.22x1 Strahlregler M.22x1 Brise-jet M.22x1 | ZZ 92771 0 | | | | | | |

TR001440

<https://www.cisal.it/rubinetto-monoacqua-a-parete-tr-tr001440>

2026-05-23