

Miscelatore vasca-doccia incasso 4 fori TR_TR000210

MODELLO **TR000210**

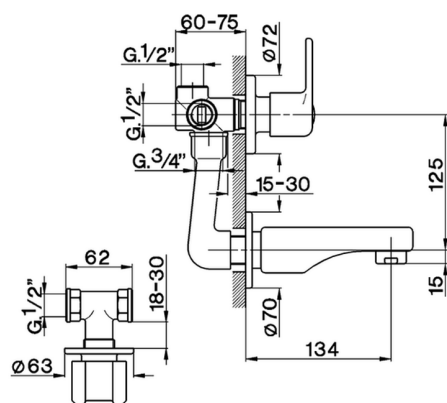
Miscelatore vasca-doccia incasso 4 fori, con deviatore 2 uscite, senza scarico automatico, senza maniglie

FINITURE DISPONIBILI



21 21 Cromo

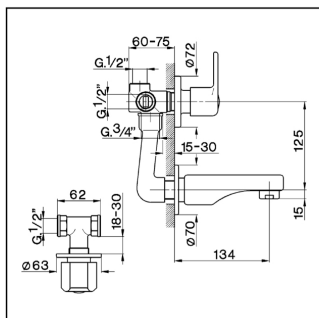
CARATTERISTICHE



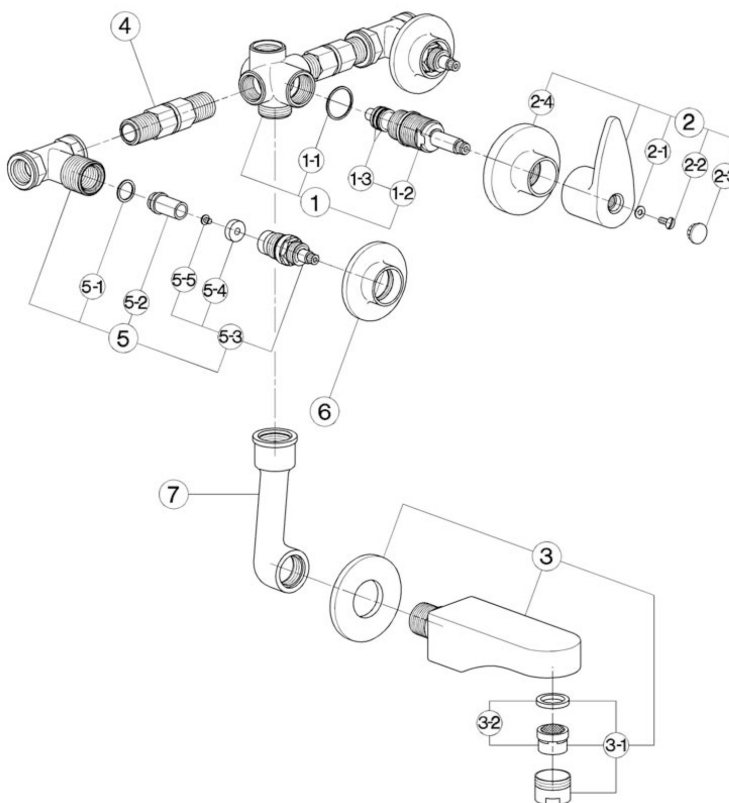
Miscelatore vasca-doccia incasso 4 fori TR TR000210

cisal

TR 00021 (TR 00020 - TR 00030)



- Gruppo vasca - doccia incasso
- *Concealed bath-shower mixer*
- UP-Badebatterie
- *Mélangeur bain/douche à encastrer*



bar	PORTATA BOCCA DI EROGAZIONE ★ SPOUT FLOW RATE DURCHFLOSS WANNENEINLAUF DEBIT BEC DEVERSEUR l/min.
0.5	10
1	14
2	20
3	24.5
4	28
5	31.5

* con resistenza silenziosa della classe di portata C (30 l/min. a 3 bar)
with hydraulic resistance of flow rate class C (30 l/min. at 3 bar)
mit geräuscharmen Widerstand der Durchflussklasse C (30 l/min. bei 3 bar)
avec aérateur classe C (30 l/min. à 3 bar)

NR.	DESCRIZIONE DESCRIPTION BESCHREIBUNG DESCRIPTION	N. CODICE CODE NO. WERKSNR. NR. CODE
1	Gruppo deviazione incasso "TR" Diverter concealed "TR" Umstelloberteil "TR" Inverseur B/D "TR"	ZZ 92733 0
1-1	Guarnizione fibra 27x24x1 Gasket rubber 27x24x1 Fiberdichtung 27x24x1 Joint en fibre rouge 27x24x1	ZZ 92687 0
1-2	Vitone per deviazione incasso Diverter valve for concealed mixer Umstelloberteil Tête pour inverseur	ZZ 92769 0
1-3	O.R. 11 NBR 75 SH. O.R. 11 NBR 75 SH. O.R. 11 NBR 75 SH. O.R. 11 NBR 75 SH.	ZZ 92690 0
2	Maniglia e cappuccio deviazione incasso "TR" Handle with escutechon for diverter "TR" Griff + Kappe UP - Umst.-TR" Croisillon + rosace "TR"	ZZ 90012 0
2-1	Rondella ottone 10x4,5x0,8 Ring in brass 10x4,5x0,8 Unterlegscheibe 10x4,5x0,8 Joint laton 10x4,5x0,8	ZZ 92663 0
2-2	Vite M.4,5x10 tt. zigrinata Screw M.4,5x10 Schraube M.4,5x10 Vis M.4,5x10	ZZ 92609 0
2-3	Placchetta a scatto deviatore vasca "TR" Cap for diverter "TR" Abdeckkappe "TR" Plaquelette cache - vis inverseur "TR"	ZZ 92610 0
2-4	Cappuccio centrale per dev. gruppo incasso Escutechon for concealed diverter Abdeckkappe Rosace - inverseur à encastrer	ZZ 92594 0

NR.	DESCRIZIONE DESCRIPTION BESCHREIBUNG DESCRIPTION	N. CODICE CODE NO. WERKS NR. NR. CODE
	Bocca per incasso Spout concealed Auslaut-UP Bec à encastrer	ZA 00024 0
3	Aeratore M.28x1 IC Mousseur M.28x1 IC	
3-1	Perilator M.28x1 IC Mousseur M.28x1 IC	ZZ 92837 0
3-2	Cartuccia per aeratore M. 28x1 Mousseur cartidge M.28x1 Kart. 1/Perlator M.28x1 Cartouche x mousseur M.28x1	ZZ 92694 0
4	Raccordo universale per gruppo incasso Connection for concealed mixer Stand-Anschluss Raccord universel	ZZ 92600 0
5	Rubinetto incasso 1/2" Concealed stop cock 1/2" Unterputventil 1/2" Robinet à encastrer 1/2"	ZZ 92732 0
5-1	Guarnizione alluminio cotto 18x14,2x1 Gasket aluminium 18x14,2x1 Dichtung 18x14,2x1 Joint aluminium 18x14,2x1	ZZ 92667 0
5-2	Sede per rubinetto incasso Seat for concealed stop cock Sitz i/UP - Ventili Siège robinet encastrer	ZZ 92611 0
5-3	Vitone 1/2" "TR" Headvalve 1/2" "TR" Oberteil 1/2" "TR" Tête 1/2" "TR"	ZZ 92869 0
5-4	Guarnizione NBR 90 SH. 16,9x5,5x5 Gasket NBR 90 SH. 16,9x5,5x5 Dichtung NBR 90 SH. 16,9x5,5x5 Joint NBR 90 SH. 16,9x5,5x5	ZZ 92699 0

NR.	DESCRIZIONE DESCRIPTION BESCHREIBUNG	N. CODICE CODE NO. WERKS.NR. NR. CODE
	Vite M.4x4,5 lb. Ø8 l.c.r. Screw M.4x4,5 Schraube M.4x4,5 Vis M.4x4,5	
5-5		ZZ 92625 0
	Cappuccio per rubinetto incasso "TR" Escutcheon for concealed stop cock "TR" Abdeckklappe "TR" Rosace - robinet "TR"	
6		ZZ 92593 0
	Raccordo collegamento a pipa per incasso Connection for concealed mixer UP - Verbindungsset Raccord x mél. B/D à encastrer	
7		ZZ 92592 0

TR000210

<https://www.cisal.it/miscelatore-vasca-doccia-incasso-4-fori-tr000210>

2025-12-07